

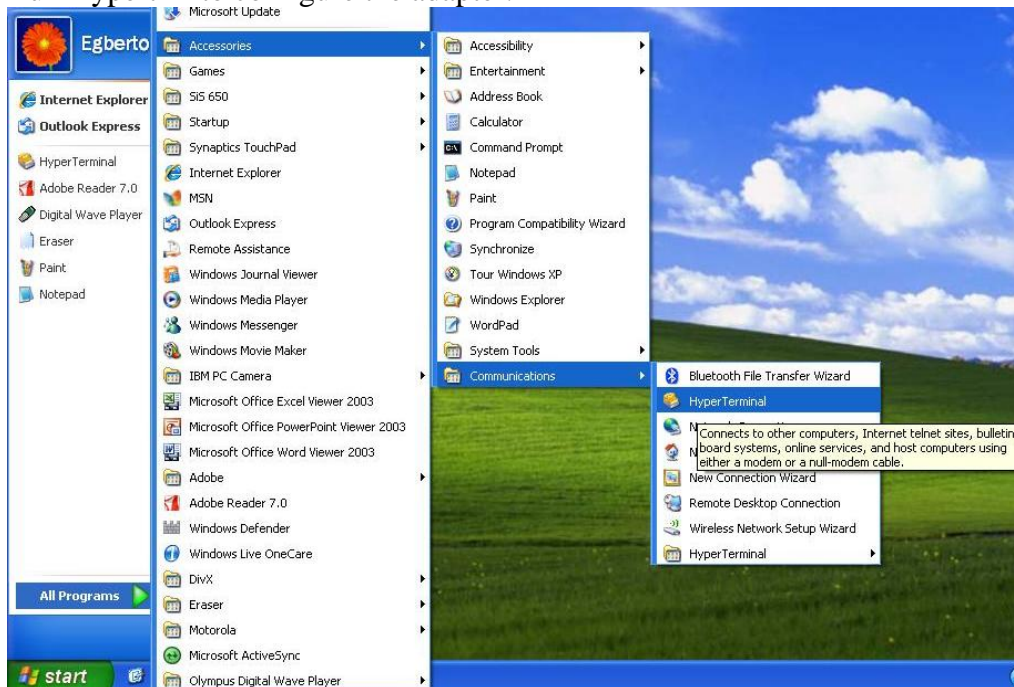


Professional Software Development and Technical Support by Knowledgeable Engineers

## Configuring Wireless Bluetooth Serial Adapter (HdwBTRS232) with Windows XP's Bluetooth Software

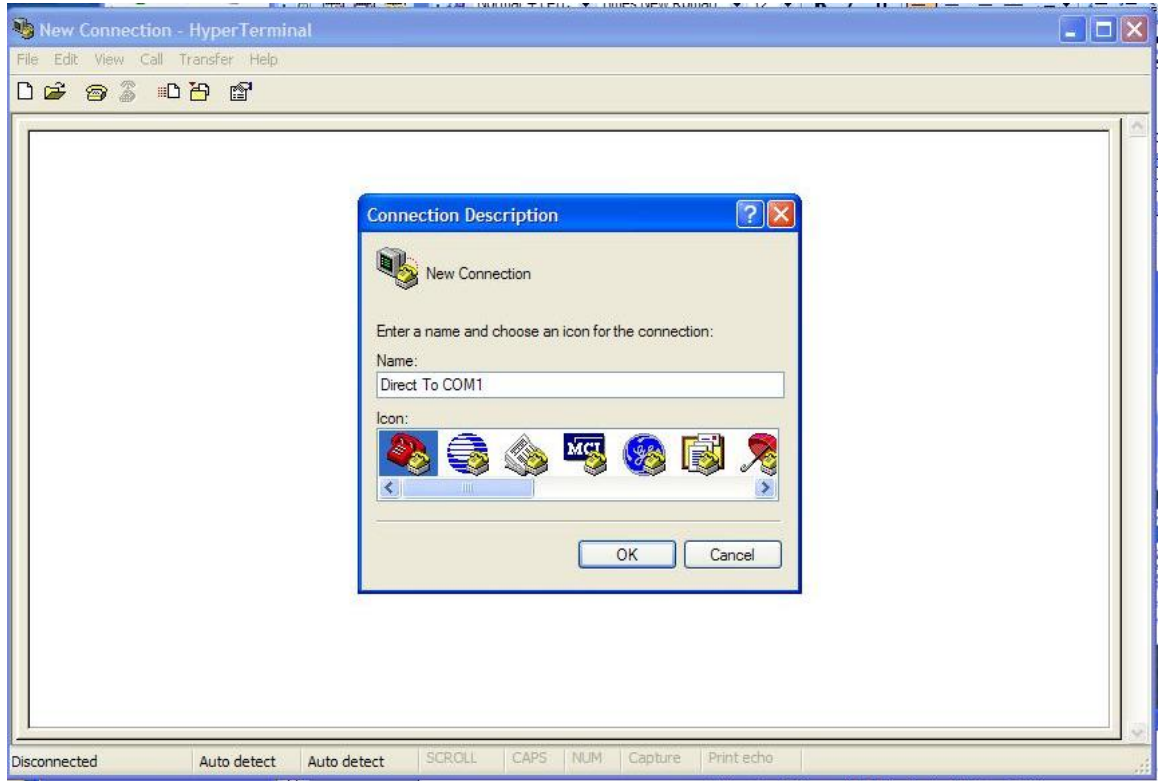
This document assumes that you are using a Bluetooth Dongle like <http://www.wcsnet.com/HdwBTUSBC1> or other Bluetooth device supported by Windows XP SP2 or greater.

1. Connect the Wireless Serial Adapter (HDWBTRS232) to an available COM port. Only one adapter should be powered on at a time while configuring in case they were previously paired. The adapter is normally shipped at 19200 baud, No Parity, 8 data bits. To be sure, while powered, use a paper clip and gently hold down the reset switch for 5 seconds to return the adapter to factory state.
2. Run Hyperterm to configure the adapter.

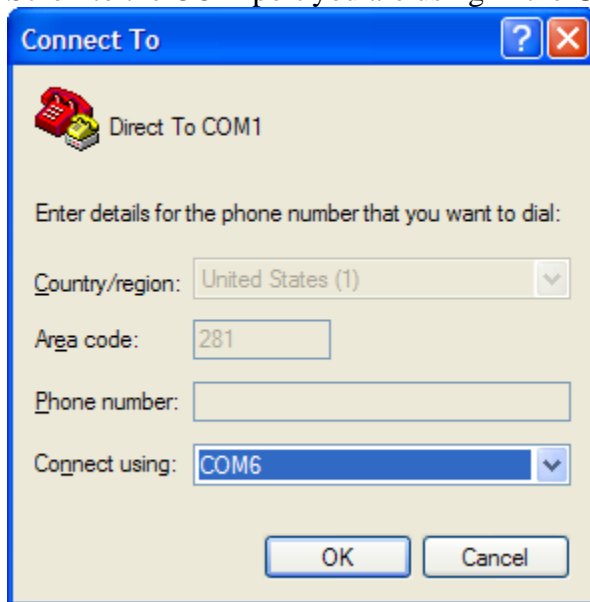


Professional Software Development and Technical Support by Knowledgeable Engineers

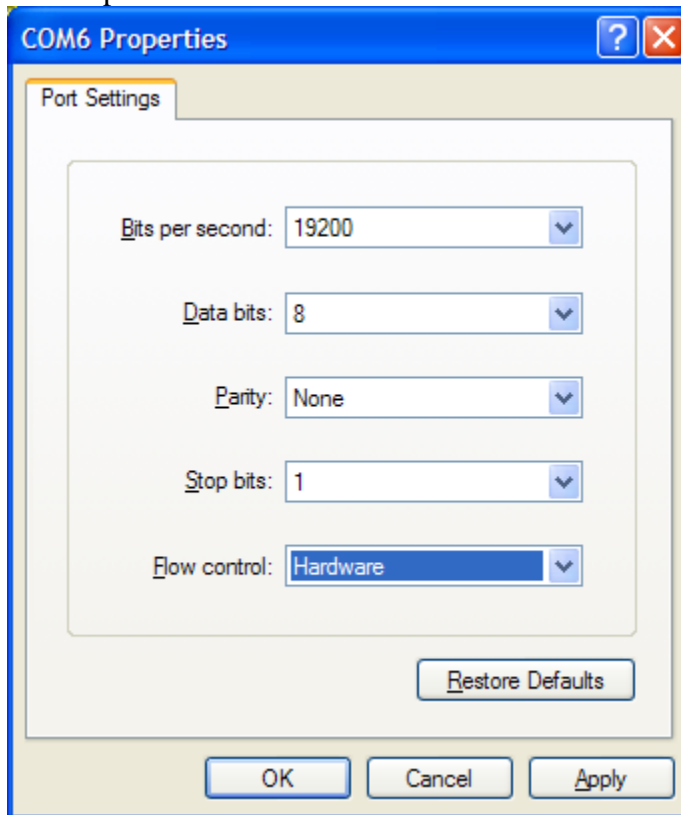
3. Type Direct to COMx where x is the port you have the adapter on. Then Click OK.



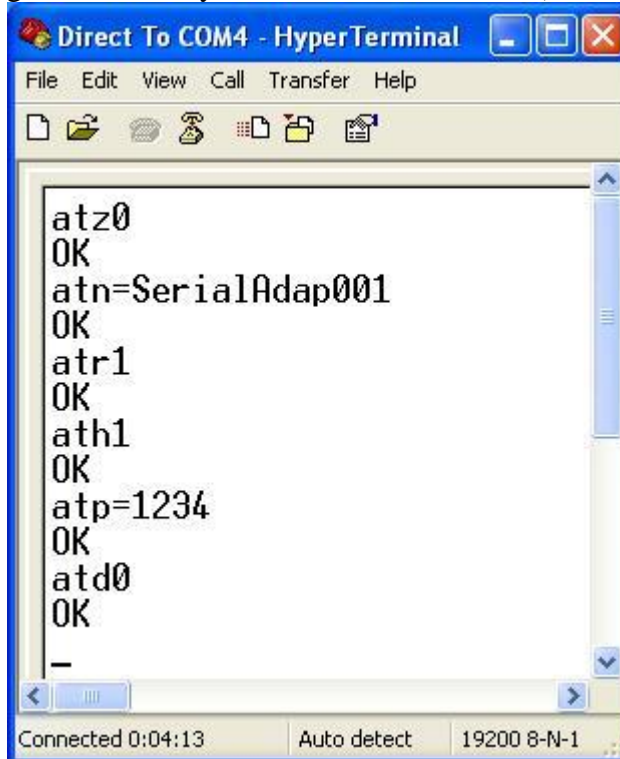
4. Scroll to the COM port you are using in the **Connect using:** field and click OK.




5. Set the parameters as follows and click OK.



6. Configure each Wireless Serial Adapter (HDWBTRS232) as follows
  - a. Use a paper clip and gently depress the reset button for about 5 to 8 seconds to hard reset adapter.
  - b. Software reset the adapter (ATZ0)
  - c. Give it a Name (ATN=SerialAdap001)
  - d. Set adapter to slave mode (ATR1)
  - e. Set adapter to discoverable mode (ATH1)
  - f. Set adapter PIN(ATP=1234)
  - g. Remove any other Bluetooth address (ATD0)



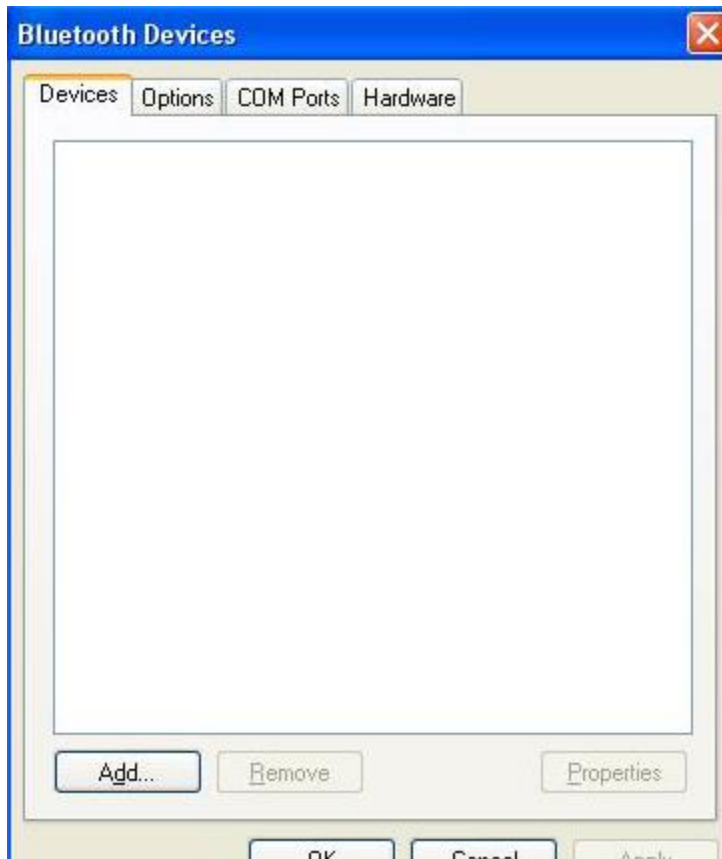
```
Direct To COM4 - HyperTerminal
File Edit View Call Transfer Help
atzo
OK
atn=SerialAdap001
OK
atr1
OK
ath1
OK
atp=1234
OK
atd0
OK
-
Connected 0:04:13 Auto detect 19200 8-N-1
```

7. If you are using an external USB ⇄ Bluetooth dongle, insert it now. It should be recognized by Windows XP SP2 and the Bluetooth icon  should appear

8. Double click the Bluetooth Icon in the system tray.



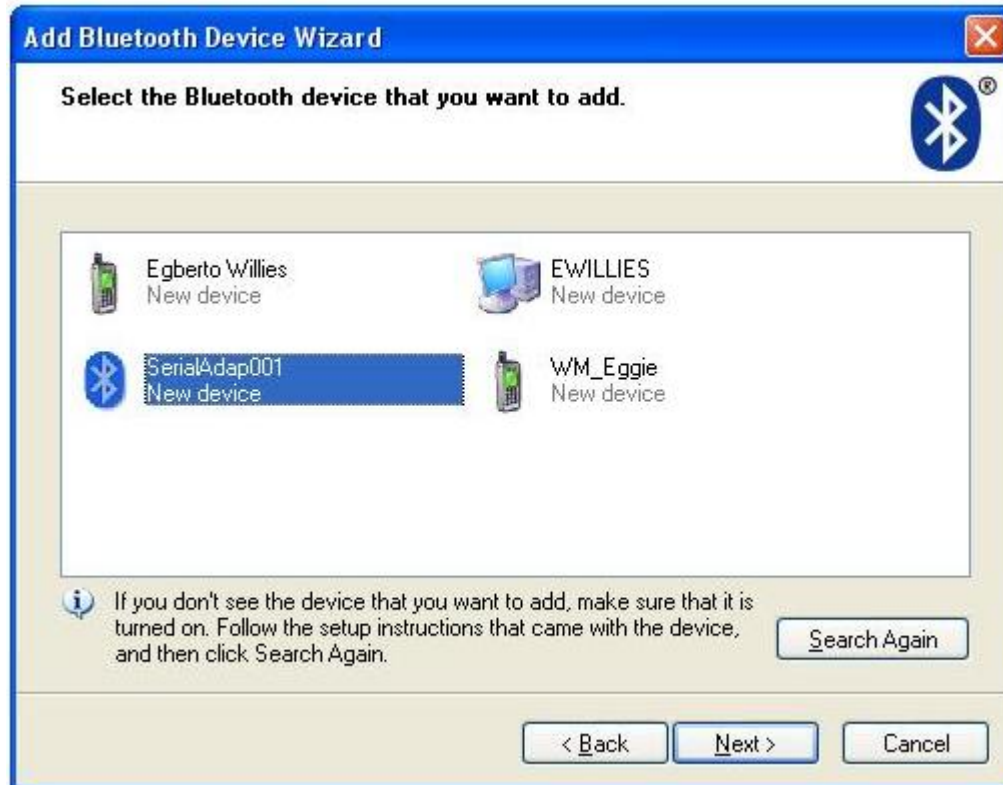
9. Click on the Add button.



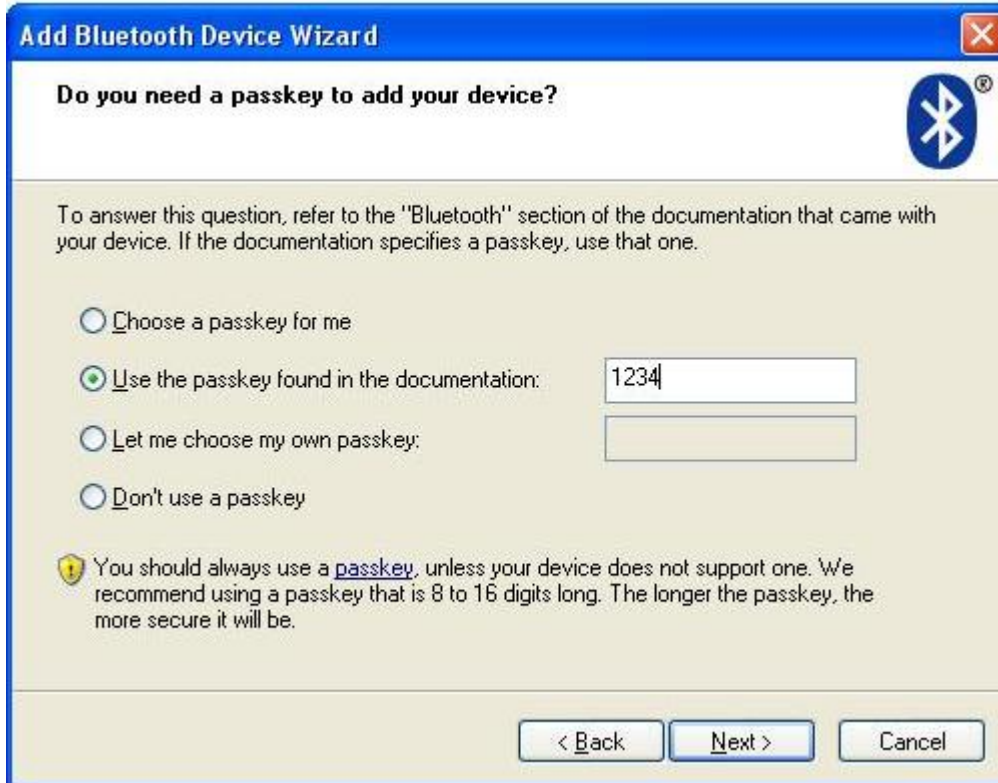
10. Select My device is set up and ready to be found and click next.



11. Click on *Search Again*, select the serial adapter, and then click *Next*.



12. Select the radial button *Use the passkey found in the documentation*. Then click



**Add Bluetooth Device Wizard**

**Do you need a passkey to add your device?**


To answer this question, refer to the "Bluetooth" section of the documentation that came with your device. If the documentation specifies a passkey, use that one.

Choose a passkey for me

Use the passkey found in the documentation:

Let me choose my own passkey:

Don't use a passkey

 You should always use a passkey, unless your device does not support one. We recommend using a passkey that is 8 to 16 digits long. The longer the passkey, the more secure it will be.

< Back   Next >   Cancel



Professional Software Development and Technical Support by Knowledgeable Engineers

13. Note the COM ports created. Only the Outgoing COM port is needed. Click **Finish**. You may delete the incoming COM port from the COM port tab.



14. To test the installation, open a new Hypertrm window as done in steps 2 through 4 on the Outgoing COM port created by the Bluetooth Wizard. Everything you type should appear in the Hypertrm window opened above. It is assumed this setup is performed on one computer